

GLEN RIDGE COOPERATIVE

11 Sycamore Drive, Storrs, Connecticut 06268

860-429-2202

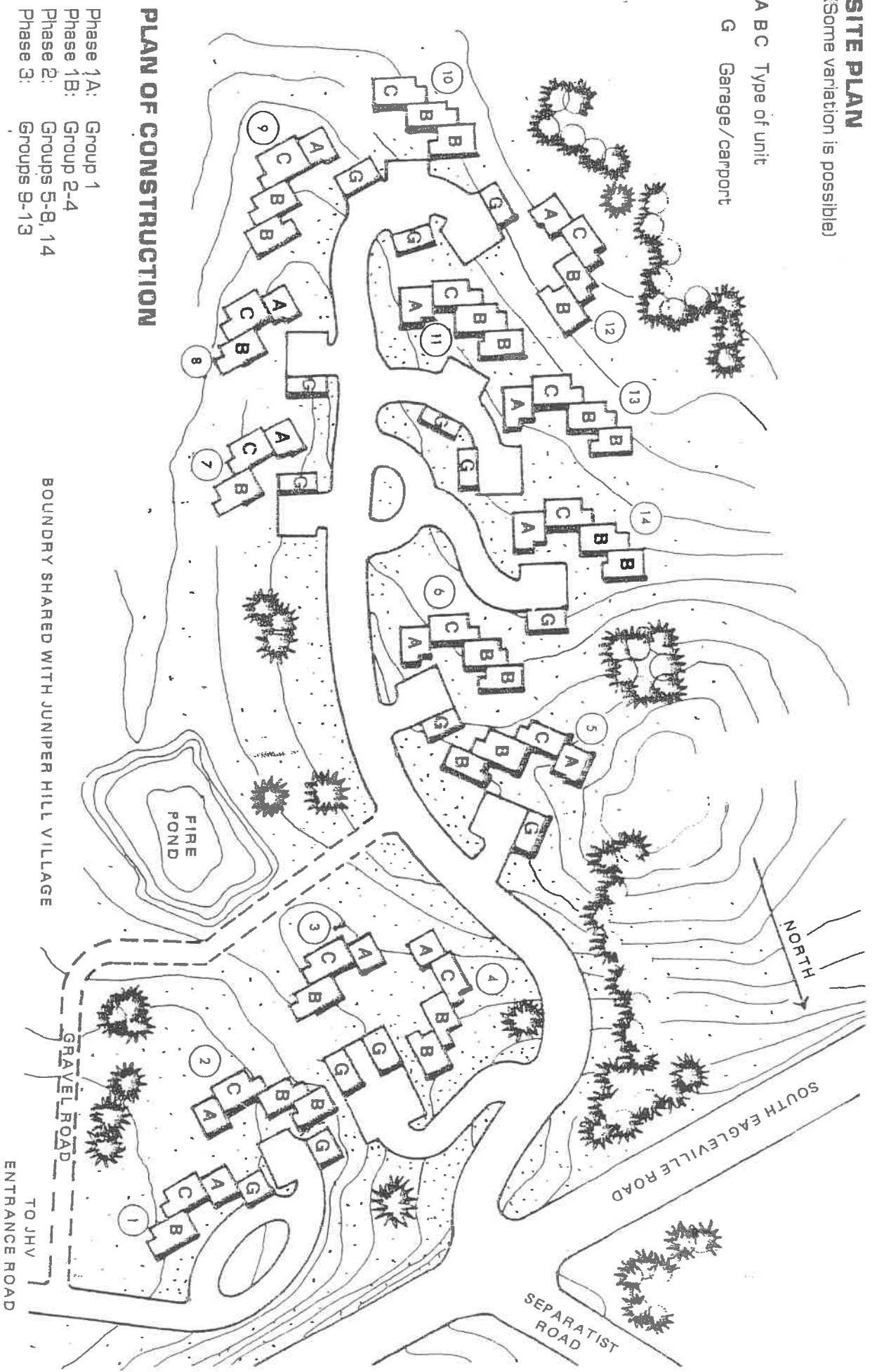
glenridge@ehmchm.org

SITE PLAN

(Some variation is possible)

A B C Type of unit

G Garage/carport



PLAN OF CONSTRUCTION

- Phase 1A: Group 1
- Phase 1B: Group 2-4
- Phase 2: Groups 5-8, 14
- Phase 3: Groups 9-13

BOUNDARY SHARED WITH JUNIPER HILL VILLAGE

GLEN RIDGE COOPERATIVE

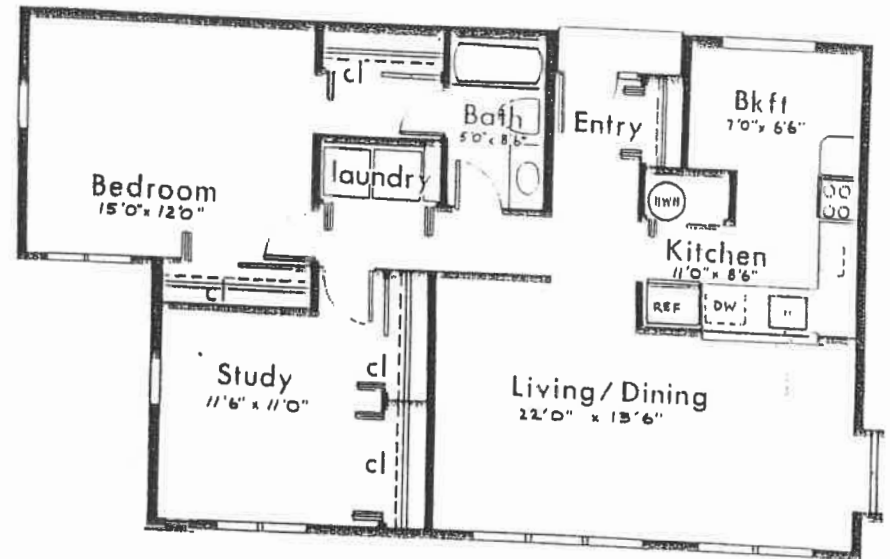
11 Sycamore Drive, Storrs, Connecticut 06268

FLOOR PLANS

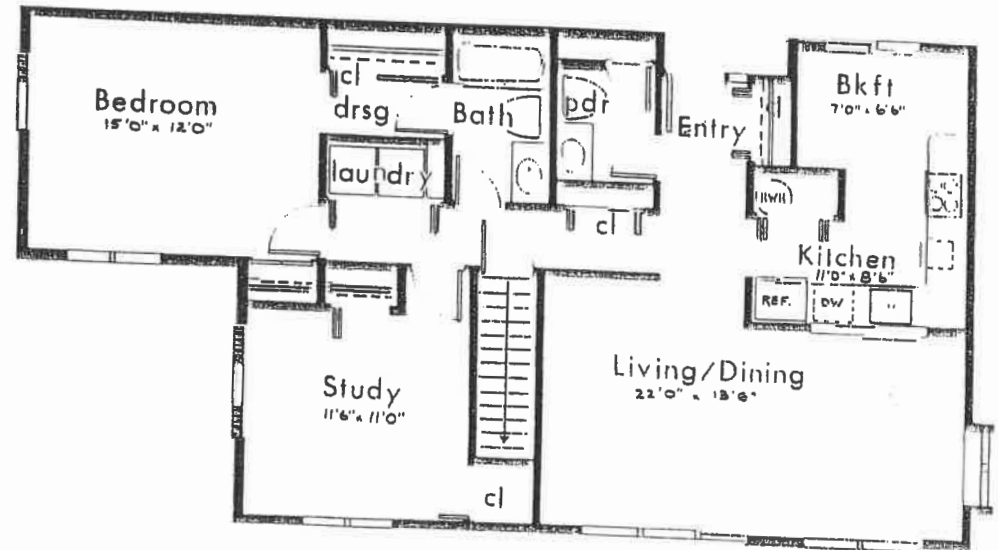
All units are equipped with:

- ❖ Wall to wall carpet
- ❖ Stove, refrigerator, dishwasher, disposal
- ❖ Connections for washer, dryer, air conditioner
- ❖ Individual heat and hot water
- ❖ Sliding glass doors from DR to deck or terrace
- ❖ Detached garage for each unit
- ❖ Insulated windows
- ❖ Fiber glass insulation: 12" ceilings, 5 1/2" walls
- ❖ Areas for flowers and vegetable gardens
- ❖ Finished or unfinished basements in some units

PLAN B: Two bedrooms, one bath
1048 square feet



PLAN C: Two bedrooms,
one and a half bath
1185 square feet



PLAN A: One bedroom, one bath
845 square feet

